

Hoist and Trolley Combinations

Push trolley capacities from 1/2 through 10 Ton

Geared trolley capacities from 1/2 through 100 Ton

CB and CF hand chain hoists can be suspended from either PT push trolleys or GT geared trolleys. These trolley/hoists combine the features, benefits, and capabilities of the individual trolley and hoist. Refer to the corresponding trolley and hoist sections for details. The standard suspension method for coupling the CF or CB to the PT push trolley or GT geared trolley is hook-to-lug. The CB can also be lug-mounted for capacities up through 5 Ton.



Lug Mount



Hook-to-lug Mount



Lug Mount

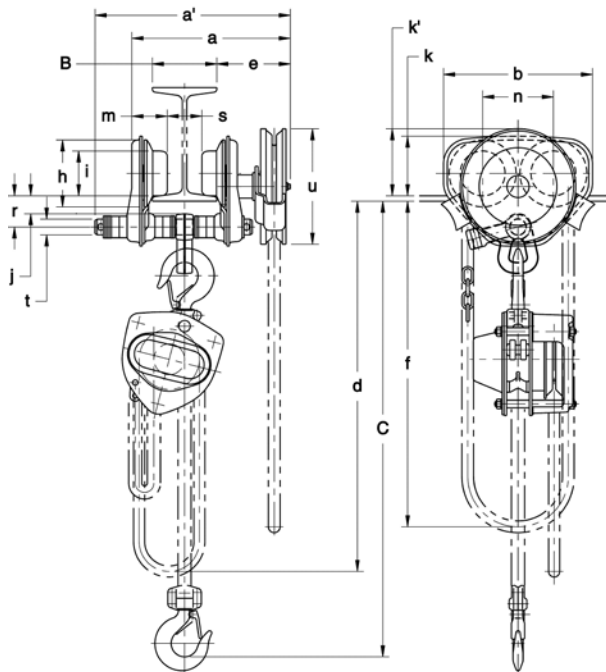


Hook-to-lug Mount

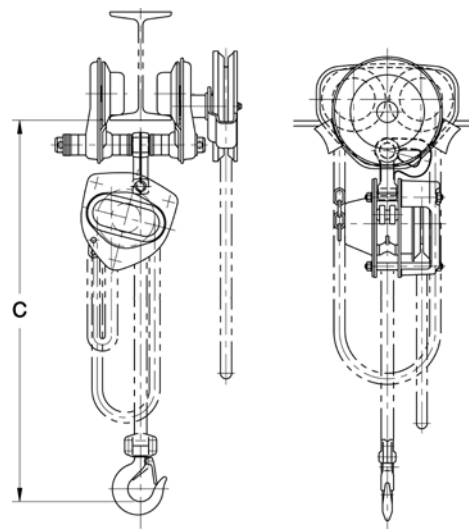
CB HAND CHAIN HOIST WITH GT GEARED TROLLEY — SPECIFICATIONS & DIMENSIONS

Cap. (Tons)	Product Code		Headroom C (in)		Min. Radius for Curve (in)	Flange Width Adjustability B (in)		a max (in)	a' (in)	b (in)	d (ft)	e (in)	f (ft)	h (in)	i (in)	j (in)	k (in)	k' (in)	m (in)	n (in)	r (in)	s (in)	t (in)	u (in)	Net Wt. (lbs)	Ship. Wt. (lbs)	Wt. for Add'l One Ft. of Lift (lbs)
	Hoist	Trolley	Hook	Lug		Std.	Option																				
1/2	CB005	GTF2010	15.3	12.0	17.7	2.28 to 5.00	5.01 to 8.00 or 8.01 to 12.00	10.8	12.2	9.3	8.0	4.6	7.0	4.2	2.80	1.1	3.7	4.2	2.2	4.4	2.0	B-1.8	0.98	7.2	46	48	1.6
1	CB010		15.4			5.00	8.00	13.7	15.2	11.0															6.1	5.0	3.35
1 1/2	CB015	GTF2020	18.5	14.4	21.7	3.23 to 6.02	6.03 to 12.00	13.7	15.2	11.0	8.0	6.1	7.0	5.0	3.35	1.4	4.4	4.3	2.8	5.2	2.4	B-1.9	1.26	7.2	89	72	2.0
2	CB020		19.4	15.0																					14.1	12.8	8.3
2 1/2	CB025	GTF2030	21.8	17.1	25.6	4.92 to 7.02	7.03 to 12.00	14.8	15.7	13.7	10.0	6.1	8.7	6.7	4.65	5.7	5.2	3.2	7.0	4.6	B-2.3	1.73	7.2	111	116	2.4	
3	CB030		26.3	21.1																				17.4	20.6	19.4	10.6
5	CB050	GTF2050	26.9	27.4	78.7	5.50 to 8.66	8.67 to 12.00	22.7	21.3	39.8	16.3	16.6	7.0	14.3	7.0	6.10	6.7	6.5	8.9	28.2	8.0	B-3.6	3.15	7.2	188	197	3.7
8	CB080	GT080	34.5	118.1	118.1	5.50 to 8.66	8.67 to 12.00	17.4	20.6	19.4	10.6	14.6	7.0	12.7	7.3	6.10	6.7	6.5	4.7	7.7	6.0	B-3.0	2.76	7.2	342	391	4.9
10	CB100	GT100	34.2																						118.1	118.1	5.50 to 8.66
15	CB150	GT150	45.3	∞	∞	5.50 to 8.66	8.67 to 12.00	22.7	21.3	39.8	16.3	16.6	7.0	14.3	7.0	6.10	6.7	6.5	8.9	28.2	8.0	B-3.6	3.15	7.2	879	983	9.1
20	CB200	GT200	51.6																						∞	∞	5.50 to 8.66

8-foot standard lift for 1/2–8 Ton models; 12-foot standard lift for 10 Ton and above
Please Note: Special lengths of load and hand chain available upon request.
Weights are approximate.



CB with GT Hook-to-lug Mount

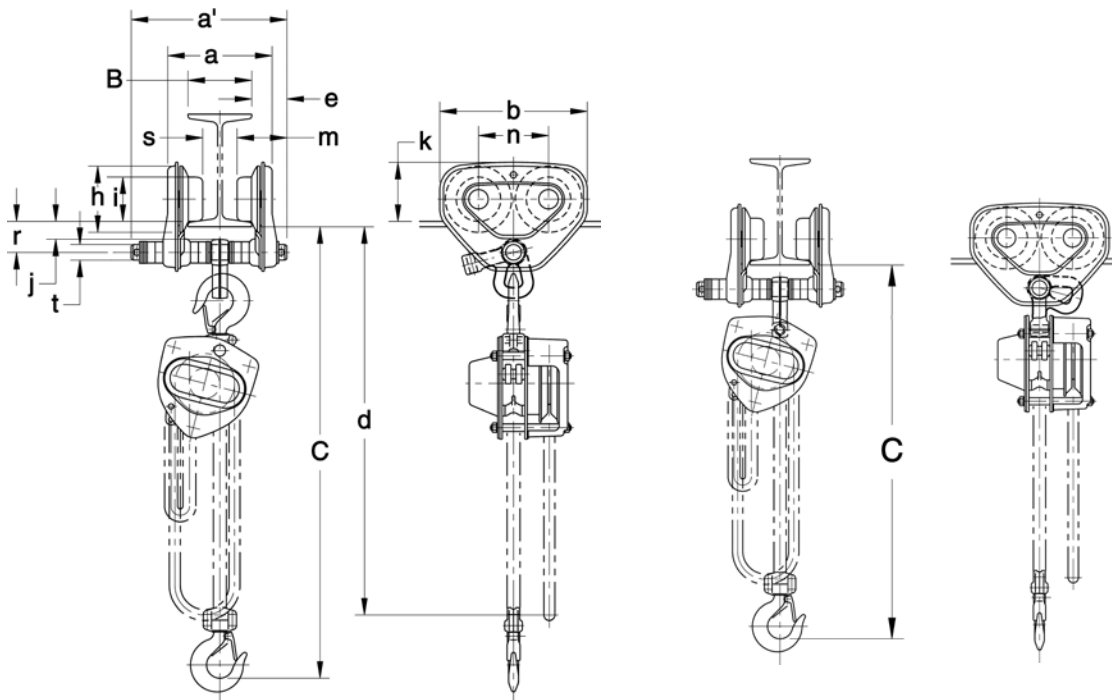


CB with GT Lug Mount

CB HAND CHAIN HOIST WITH PT PUSH TROLLEY — SPECIFICATIONS & DIMENSIONS

Cap. (Tons)	Product Code		Headroom C (in)		Min. Radius for Curve (in)	Flange Width Adjustability B (in)		a max (in)	a' (in)	b (in)	d (ft)	e (in)	h (in)	i (in)	j (in)	k (in)	m (in)	n (in)	r (in)	s (in)	t (in)	Net Wt. (lbs)	Ship. Wt. (lbs)	Wt. for Add'l One Ft. of Lift (lbs)
			Hook	Lug		Std.	Option																	
	Hoist	Trolley	Hook	Lug		Std.	Option																	
1/2	CB005	PTF2005	14.5	11.6	13.8	2.28 to 4.00	4.01 to 8.00 or 8.01 to 12.00	6.8	8.0	7.2	8.0	1.8	3.2	2.36	0.8	3.0	2.7	3.3	1.5	B-1.8	0.87	31	32	1.0
1	CB010	PTF2010	15.4	12.0	17.7	2.28 to 5.00	5.01 to 8.00 or 8.01 to 12.00	8.5	9.8	9.3		2.2	4.2	2.80	1.1	3.7	3.1	4.4	2.0	B-1.9	0.98	40	42	1.2
1 1/2	CB015	PTF2020	18.5	14.4	21.7	3.23 to 6.02	6.03 to 12.00	10.4	11.8	11.0	8.0	2.7	5.0	3.35	1.4	4.4	3.8	5.2	2.4	B-2.3	1.26	61	62	1.4
2	CB020		19.4	15.0																		70	73	1.6
2 1/2	CB025	PTF2030	21.8	17.1	25.6						3.23 to 6.02	6.03 to 12.00	11.0	12.6	12.8	8.3	3.1	5.8	3.94	5.3	4.3	6.0	2.7	B-2.3
3	CB030		26.3	21.1		95	101	2.1																
5	CB050	PTF2050	26.9	27.2	78.7	4.92 to 7.02	7.03 to 12.00	10.7	11.7	13.7						10.0	2.1	5.7	4.65	5.7	3.6	7.0	4.6	B-3.0
8	CB080	PT080	34.5	—	118.1	5.50 to 8.66	8.67 to 12.00	14.4	17.6	19.4	10.6	4.1	7.3	6.10	6.7	5.9	7.7	6.0	B-3.6	2.76	336	384	4.2	
10	CB100	PT100	34.2	—	118.1	5.50 to 8.66	8.67 to 12.00	14.4	17.6	19.4	14.6										397	457	5.5	

8-foot standard lift for 1/2-8 Ton models; 12-foot standard lift for 10 Ton.
 Please Note: Special lengths of load and hand chain available upon request.
 Weights are approximate.



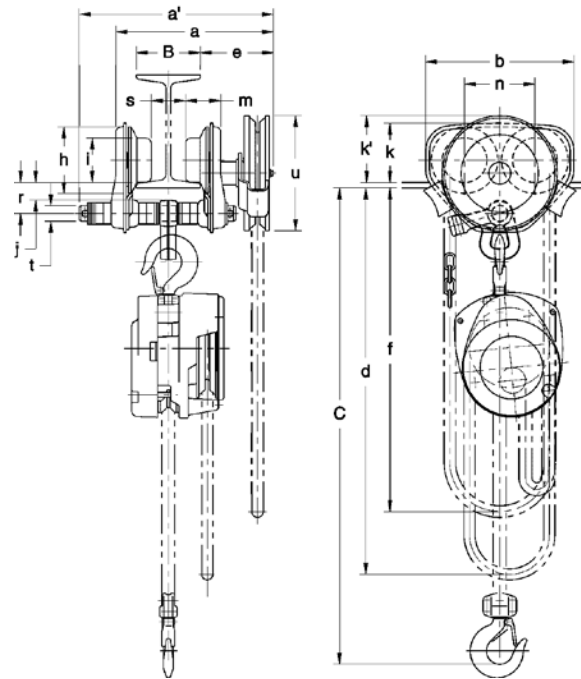
CB with PT Hook-to-lug Mount

CB with PT Lug Mount

CF HAND CHAIN HOIST WITH GT GEARED TROLLEY — SPECIFICATIONS & DIMENSIONS

Cap. (Tons)	Product Code		Head room C (in)	Min. Radius for Curve (in)	Flange Width Adjustability B (in)		a max (in)	a' (in)	b (in)	d (ft)	e (in)	f (ft)	h (in)	i (in)	j (in)	k (in)	k' (in)	m (in)	n (in)	r (in)	s (in)	t (in)	u (in)	Net Wt. (lbs)	Ship. Wt. (lbs)	Wt. for Add'l One Ft. of Lift (lbs)
	Hoist	Trolley			Std.	Option																				
1/2	CF005	GTF2010	16.6	17.7	2.28 to 5.00	5.01 to 8.00 or 8.01 to 12.00	10.8	12.2	9.3	10.3	4.6	9.0	4.2	2.80	1.1	3.7	4.2	2.2	4.4	2.0	B-1.9	0.98	7.2	48	51	1.6
1	CF010		18.3		53	56	1.8																			
1 1/2	CF015	GTF2020	22.0	21.7	3.23 to 6.02	6.03 to 12.00	13.7	15.2	11.0	6.1	9.0	5.0	3.35	1.4	4.4	4.3	2.8	5.2	2.4	B-2.3	1.26	7.2	77	81	2.0	
2	CF020		24.8																				84	88	2.4	
3	CF030	GTF2030	29.5	25.6	4.92 to 7.02	7.03 to 12.00	14.1	15.7	12.8	10.6	6.2	5.8	3.94	5.3	4.5	3.1	6.0	2.7	B-3.0	1.42	7.2	117	124	2.8		
5	CF050	GTF2050	27.7	78.7			14.8		13.7	12.0	6.1	10.7	5.7	4.65	—	5.7	5.2	3.2		7.0		4.6	1.73	186	194	3.5

10-foot standard lift for all models.
Please Note: Special lengths of load and hand chain available upon request.
Weights are approximate.

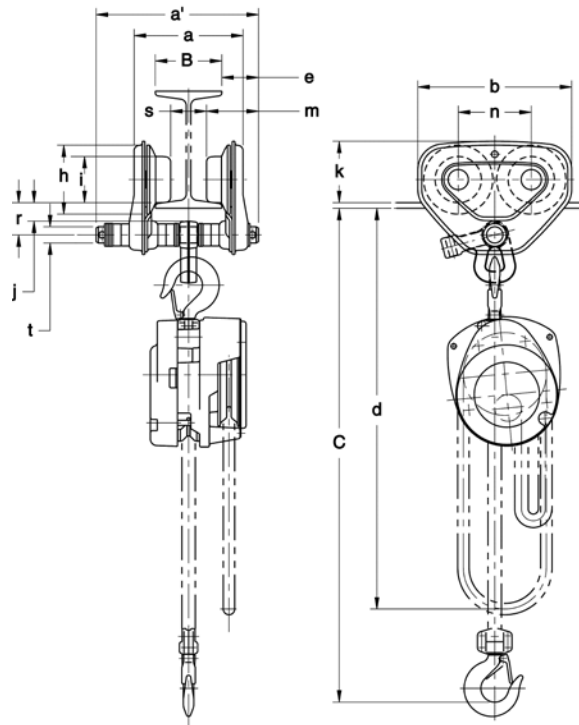


CF with GT

CF HAND CHAIN HOIST WITH PT PUSH TROLLEY — SPECIFICATIONS & DIMENSIONS

Cap. (Tons)	Product Code		Head room C (in)	Min. Radius for Curve (in)	Flange Width Adjustability B (in)		a max (in)	a' (in)	b (in)	d (ft)	e (in)	h (in)	i (in)	j (in)	k (in)	m (in)	n (in)	r (in)	s (in)	t (in)	Net Wt. (lbs)	Ship. Wt. (lbs)	Wt. for Add'l One Ft. of Lift (lbs)
	Hoist	Trolley			Std.	Option																	
1/2	CF005	PTF2005	16.1	13.8	2.28 to 4.00	4.01 to 8.00 or 8.01 to 12.00	6.8	8.0	7.2		1.8	3.2	2.36	0.8	3.0	2.7	3.3	1.5	B-1.8	0.87	33	35	1.0
1	CF010	PTF2010	18.3	17.7	2.28 to 5.00	5.01 to 8.00 or 8.01 to 12.00	8.5	9.8	9.3	10.3	2.2	4.2	2.80	1.1	3.7	3.1	4.4	2.0	B-1.9	0.98	44	47	1.2
1 1/2	CF015	PTF2020	22.0	21.7	3.23 to 6.02	6.03 to 12.00	10.4	11.8	11.0		2.7	5.0	3.35	1.4	4.4	3.8	5.2	2.4	B-2.3	1.26	69	72	1.4
2	CF020		24.8				11.0	12.6	12.8	10.6	3.1	5.8	3.94		5.3	4.3	6.0	2.7			1.42	108	114
3	CF030	PTF2030	29.5	25.6			11.0	12.6	12.8	10.6	3.1	5.8	3.94		5.3	4.3	6.0	2.7		1.42	108	114	2.1
5	CF050	PTF2050	27.7	78.7	4.92 to 7.02	7.03 to 12.00	10.7	11.7	13.7	12.0	2.1	5.7	4.65	—	5.7	3.6	7.0	4.6	B-3.0	1.73	177	184	2.9

10-foot standard lift for all models.
 Please Note: Special lengths of load and hand chain available upon request.
 Weights are approximate.



CF with PT

CB Hand Chain Hoist

1/2 through 100 Ton capacity

Harrington CB hand chain hoists combine a rugged exterior shell with machined interior components to handle your most demanding lifting operations. An efficient drive train minimizes manual effort, while double enclosed brake cover, standard slip clutch, and double pawl springs enhance performance and reliability.

Many Benefits From More Features:

- Experience exceptional durability thanks to all-steel construction featuring rugged gear case enclosure and handwheel cover.
- Enjoy increased lifting height thanks to low headroom.
- Compact design results in lightweight and easy portability.
- Minimize manual effort thanks to efficient drive train.
- Standard slip clutch device prevents the hoist from being used to lift damaging loads beyond rated capacity.
- Double pawl springs provide redundancy for reliable operation of brake mechanism.
- Get reliable braking with double enclosed brake cover that keeps out dust, rain, and dirt.

Options: (See pages 28-29)

- Chain container
- Corrosion-resistant chain
- Inspection hook

Capabilities To Count On:

- 8-foot standard lift (12-foot for 10 Ton and greater), nonstandard lifts and hand chain drops are also available.
- Grade 100 heat-treated manganese alloy load chain resists abrasion and wear while minimizing chain weight.
- Forged and heat-treated alloy steel hooks are designed to open slowly, without fracturing under excessive loads.
- Test certificate verifies that every hoist has been factory load tested to 125% of rated capacity, in accordance with ASME B30.16 requirements.



CF Hand Chain Hoist

1/2 through 5 Ton capacity

Harrington CF hand chain hoists give you a practical alternative thanks to an economical design using fewer parts for trouble-free service. Outstanding durability is due to a die-cast aluminum body and high-strength, heat-treated main pinion shaft and load gear. Pre-lubricated ball bearings, precision machined gears, and Weston-style load brake make lifting smooth and easy while allowing long service and low maintenance.

Many Benefits From More Features:

- Experience exceptional strength with a thick die-cast aluminum body.
- Handle tough demands with high-strength, heat-treated main pinion shaft and load gear.
- Get positive braking action with Weston-style load brake incorporating two moisture-resistant brake pads with four braking surfaces.
- Minimize manual effort thanks to smooth running, pre-lubricated ball bearings, and precision machined drive train components.
- Simplify maintenance with fewer parts and an easy-to-work-on design.

Capabilities To Count On:

- 10-foot lift is standard, 15- and 20-foot lifts are also stocked; nonstandard lifts and hand chain drops available as well.
- Grade 100 heat-treated manganese alloy load chain resists abrasion and wear while minimizing chain weight.
- Forged and heat-treated alloy steel hooks are designed to open slowly and not fracture under excessive loads.
- Test certificate verifies that every hoist has been factory load tested to 125% of rated capacity, in accordance with ASME B30.16 requirements.

Options: (See Pages 28-29)

- Chain container
- Corrosion-resistant chain
- Inspection hook



PT Push Trolley and GT Geared Trolley

Push trolley capacities from 1/2 through 10 Ton

Geared trolley capacities from 1/2 through 20 Ton

Harrington push and geared trolleys help you maneuver easily on your most demanding lifting operations. They feature specially designed contoured wheels that ensure reliable tracking, and their sealed ball bearings avoid maintenance hassles and provide smooth operation.

Many Benefits From More Features:

- Get sure trolley tracking with specially designed contoured wheels that fit both tapered and flat-flange beams.
- Maintenance-free, sealed precision ball bearings are lubed-for-life and offer smooth movement, with low friction and long life.
- Get strength and rigidity from a lightweight, compact design.
- Easily adjust trolley to fit a wide variety of beam flange widths.
- Load equalizing suspension distributes the load to all wheels.
- Wide standard flange ranges reduce the need for optional extended shaft kits.
- Match the needs of the job with a variety of trolley hoist suspenders.

Capabilities To Count On:

- Use the economical PT for applications involving longer traversing distances.
- Use the GT for precise load control and shorter traversing distances.
- 1/2 through 3 Ton are supplied with Suspender C, which is suitable for most applications. Alternate suspenders may be required for your application—see trolley hoist suspenders on page 26.
- Geared trolleys of larger capacities are available. Please consult factory for details.



PT Push Trolley



GT Geared Trolley

Trolley Hoist Suspenders



Suspender C (sm)

For use with CF and CB models in 1/2, 1, 1 1/2, 2, and 2 1/2 Ton capacities.



Suspender C (lg)

For use with CF and CB models in 3 and 5 Ton capacities.

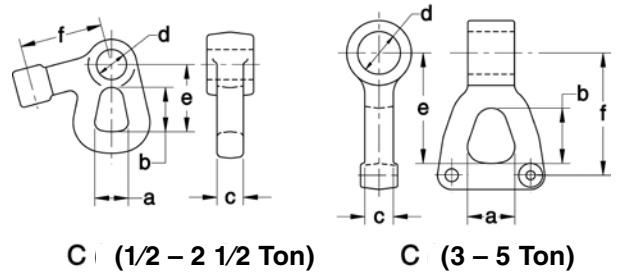


Suspender H

For hook mounting CF, CB and Harrington electric hoists in 1/2 through 3 Ton capacities.

SUSPENDER C — DIMENSIONS

Cap. (Tons)	a (in)	b (in)	c (in)	d (in)	e (in)	f (in)
1/2	1.0	1.3	0.6	0.87	2.1	2.6
1	1.1	1.5	0.7	0.99	2.2	2.7
2	1.3	1.6	0.9	1.27	2.7	3.2
2 1/2	1.4	1.7	1.0	1.43	3.0	3.6
3	1.6	1.9	1.2	1.43	4.0	4.5
5	2.4	2.8	1.4	2.13	5.5	6.1



SUSPENDER H — DIMENSIONS

Cap. (Tons)	a (in)	b (in)	c (in)	d (in)	e (in)
1/4-1/2	1.0	1.3	0.4	0.91	2.3
1	1.1	1.5	0.5	1.02	2.6
1 1/2-2	1.4	1.8	0.7	1.30	3.3
2 1/2-3	1.7	2.1	0.9	1.46	3.9

