



# HMPE Slings Eye & Eye

## HH-EEP



HHI PART NUMBER	Nominal Diameter	Size # (Circ.)	Approx. Wgt Rope	Working Load Limit Vertical	Sling Minimum Tensile Strength Vertical
	Inches	Inches	Lbs/FT	Pounds	Pounds
HH-11-EEP	7/16"	1-1/4"	0.042	4,200	21,000
HH-12-EEP	1/2"	1-1/2"	0.064	6,260	31,300
HH-14-EEP	9/16"	1-3/4"	0.079	7,580	37,900
HH-16-EEP	5/8"	2"	0.106	10,280	51,400
HH-18-EEP	3/4"	2-1/4"	0.133	13,700	68,500
HH-22-EEP	7/8"	2-3/4"	0.196	18,520	92,600
HH-24-EEP	1"	3"	0.234	22,000	110,000
HH-28-EEP	1-1/8"	3-1/2"	0.319	29,400	147,000
HH-30-EEP	1-1/4"	3-3/4"	0.362	33,000	165,000
HH-32-EEP	1-5/16"	4"	0.417	39,200	196,000
HH-36-EEP	1-1/2"	4-1/2"	0.517	44,200	221,000
HH-40-EEP	1-5/8"	5"	0.66	58,200	291,000
HH-44-EEP	1-3/4"	5-1/2"	0.78	62,800	314,000
HH-48-EEP	2"	6"	0.91	71,000	355,000
HH-52-EEP	2-1/8"	6-1/2"	1.09	85,600	428,000
HH-56-EEP	2-1/4"	7"	1.22	96,200	481,000
HH-60-EEP	2-1/2"	7-1/2"	1.48	106,000	530,000
HH-64-EEP	2-5/8"	8"	1.67	119,200	596,000
HH-68-EEP	2-3/4"	8-1/2"	1.87	132,000	660,000
HH-72-EEP	3"	9"	2.14	156,000	780,000
HH-76-EEP	3-1/8"	9-1/2"	2.35	170,000	850,000
HH-80-EEP	3-1/4"	10"	2.61	188,000	940,000
HH-84-EEP	3-1/2"	10-1/2"	2.98	221,600	1,108,000
HH-88-EEP	3-5/8"	11"	3.24	250,000	1,250,000
HH-92-EEP	3-3/4"	11-1/2"	3.43	263,400	1,317,000
HH-96-EEP	4"	12"	3.94	304,000	1,520,000
HH-100-EEP	4-1/8"	12-1/2"	4.57	324,400	1,622,000
HH-104-EEP	4-1/4"	13"	5.14	339,400	1,697,000
HH-108-EEP	4-1/2"	13-1/2"	5.3	365,400	1,827,000
HH-112-EEP	4-5/8"	14"	5.46	376,000	1,880,000
HH-116-EEP	4-3/4"	14-1/2"	5.87	385,400	1,927,000
HH-120-EEP	5"	15"	6.06	413,900	2,069,500
HH-124-EEP	5-1/8"	15-1/2"	6.57	442,400	2,212,000
HH-128-EEP	5-1/4"	16"	7.03	471,000	2,355,000
HH-132-EEP	5-1/2"	16-1/2"	7.49	499,500	2,497,500
HH-136-EEP	5-5/8"	17"	8.13	528,000	2,640,000
HH-140-EEP	5-3/4"	17-1/2"	8.71	556,500	2,782,500
HH-144-EEP	6"	18"	9.32	585,000	2,925,000
HH-148-EEP	6-1/8"	18-1/2"	9.85	613,600	3,068,000
HH-152-EEP	6-1/4"	19"	10.38	642,100	3,210,500
HH-156-EEP	6-1/2"	19-1/2"	11.03	670,600	3,353,000
HH-160-EEP	6-5/8"	20"	11.59	699,200	3,496,000
HH-164-EEP	6-3/4"	20-1/2"	12.27	727,700	3,638,500
HH-168-EEP	7"	21"	12.84	756,200	3,781,000
HH-172-EEP	7-1/8"	21-1/2"	13.34	792,700	3,963,500
HH-176-EEP	7-1/4"	22"	13.92	813,200	4,066,000
HH-180-EEP	7-1/2"	22-1/2"	14.52	841,800	4,209,000
HH-184-EEP	7-5/8"	23"	15.27	870,300	4,351,500
HH-188-EEP	7-3/4"	23-1/2"	15.89	898,800	4,494,000
HH-192-EEP	8"	24"	16.53	927,400	4,637,000
HH-196-EEP	8-1/8"	24-1/2"	17.32	955,800	4,779,000
HH-200-EEP	8-1/4"	25"	17.98	984,400	4,922,000



### Features & Benefits

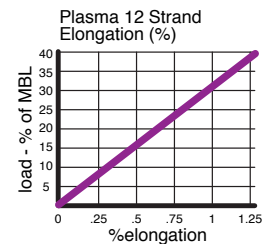
- Highest Strength
- Lowest Stretch
- Low Creep
- Soft Hand
- Torque Free
- Easy Splicing
- Floats

### Applications

- Replacement for Wire Rope
- Vessel Mooring
- Inland River Barge Lines
- Lifting Slings
- Winch Lines
- Aerial Retrieval Lines
- Emergency Tow Packages

Specific gravity	0.98*
Melting point	284° F (140° C)*
Critical temp.	150° F (65° C)*
Coefficient of friction	0.09-0.12-
Elongation at break	4%-5%
Fiber water absorption	0%
UV resistance	moderate
Wet abrasion	superior
Dry abrasion	superior

\*-value based on date supplied by the fiber manufacturer for new, dry fiber



Tensile Strengths are determined in accordance with Cordage Institute 1500.2.

Test Methods for Fiber Rope. Minimum Tensile Strength (MTS) published

Assumes spliced terminations. Weight are calculated at linear density under stated preload (200d2) plus 4%.

<-> Design Factor 5:1 <-> Minimum D/d 3:1

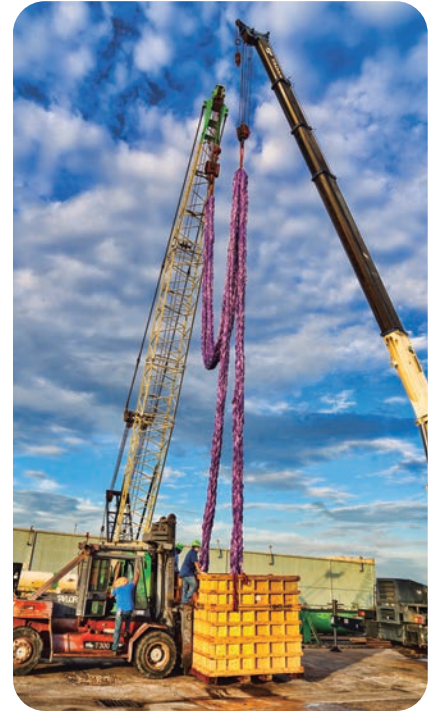


# HMPE Slings Endless Grommet

## HH-EP



HHI PART NUMBER	Nominal Diameter	Size # (Circ.)	Approx. Wgt Rope	Working Load Limit Vertical	Sling Minimum Tensile Strength Vertical
	Inches	Inches	Lbs/FT	Pounds	Pounds
HH-11-EP	7/16"	1-1/4"	0.042	6,930	34,650
HH-12-EP	1/2"	1-1/2"	0.064	10,329	51,645
HH-14-EP	9/16"	1-3/4"	0.079	12,507	62,535
HH-16-EP	5/8"	2"	0.106	16,962	84,810
HH-18-EP	3/4"	2-1/4"	0.133	22,605	113,025
HH-22-EP	7/8"	2-3/4"	0.196	30,558	152,790
HH-24-EP	1"	3"	0.234	36,300	181,500
HH-28-EP	1-1/8"	3-1/2"	0.319	48,510	242,550
HH-30-EP	1-1/4"	3-3/4"	0.362	54,450	272,250
HH-32-EP	1-5/16"	4"	0.417	64,680	323,400
HH-36-EP	1-1/2"	4-1/2"	0.517	72,930	364,650
HH-40-EP	1-5/8"	5"	0.66	96,030	480,150
HH-44-EP	1-3/4"	5-1/2"	0.78	103,620	518,100
HH-48-EP	2"	6"	0.91	117,150	585,750
HH-52-EP	2-1/8"	6-1/2"	1.09	141,240	706,200
HH-56-EP	2-1/4"	7"	1.22	158,730	793,650
HH-60-EP	2-1/2"	7-1/2"	1.48	174,900	874,500
HH-64-EP	2-5/8"	8"	1.67	196,680	983,400
HH-68-EP	2-3/4"	8-1/2"	1.87	217,800	1,089,000
HH-72-EP	3"	9"	2.14	257,400	1,287,000
HH-76-EP	3-1/8"	9-1/2"	2.35	280,500	1,402,500
HH-80-EP	3-1/4"	10"	2.61	310,200	1,551,000
HH-84-EP	3-1/2"	10-1/2"	2.98	365,640	1,828,200
HH-88-EP	3-5/8"	11"	3.24	412,500	2,062,500
HH-92-EP	3-3/4"	11-1/2"	3.43	434,610	2,173,050
HH-96-EP	4"	12"	3.94	501,600	2,508,000
HH-100-EP	4-1/8"	12-1/2"	4.57	535,260	2,676,300
HH-104-EP	4-1/4"	13"	5.14	560,010	2,800,050
HH-108-EP	4-1/2"	13-1/2"	5.3	602,910	3,014,550
HH-112-EP	4-5/8"	14"	5.46	620,400	3,102,000
HH-116-EP	4-3/4"	14-1/2"	5.87	635,910	3,179,550
HH-120-EP	5"	15"	6.06	682,935	3,414,675
HH-124-EP	5-1/8"	15-1/2"	6.57	729,960	3,649,800
HH-128-EP	5-1/4"	16"	7.03	777,150	3,885,750
HH-132-EP	5-1/2"	16-1/2"	7.49	824,175	4,120,875
HH-136-EP	5-5/8"	17"	8.13	871,200	4,356,000
HH-140-EP	5-3/4"	17-1/2"	8.71	918,225	4,591,125
HH-144-EP	6"	18"	9.32	965,250	4,826,250
HH-148-EP	6-1/8"	18-1/2"	9.85	1,012,440	5,062,200
HH-152-EP	6-1/4"	19"	10.38	1,059,465	5,297,325
HH-156-EP	6-1/2"	19-1/2"	11.03	1,106,490	5,532,450
HH-160-EP	6-5/8"	20"	11.59	1,153,680	5,768,400
HH-164-EP	6-3/4"	20-1/2"	12.27	1,200,705	6,003,525
HH-168-EP	7"	21"	12.84	1,247,730	6,238,650
HH-172-EP	7-1/8"	21-1/2"	13.34	1,307,955	6,539,775
HH-176-EP	7-1/4"	22"	13.92	1,341,780	6,708,900
HH-180-EP	7-1/2"	22-1/2"	14.52	1,388,970	6,944,850
HH-184-EP	7-5/8"	23"	15.27	1,435,995	7,179,975
HH-188-EP	7-3/4"	23-1/2"	15.89	1,483,020	7,415,100
HH-192-EP	8"	24"	16.53	1,530,210	7,651,050
HH-196-EP	8-1/8"	24-1/2"	17.32	1,577,070	7,885,350
HH-200-EP	8-1/4"	25"	17.98	1,624,260	8,121,300



### Features & Benefits

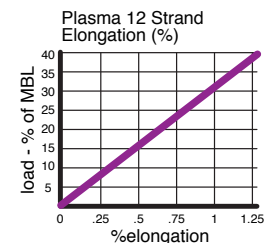
- Highest Strength
- Lowest Stretch
- Low Creep
- Soft Hand
- Torque Free
- Easy Splicing
- Floats

### Applications

- Replacement for Wire Rope
- Vessel Mooring
- Inland River Barge Lines
- Lifting Slings
- Winch Lines
- Aerial Retrieval Lines
- Emergency Tow Packages

Specific gravity	0.98*
Melting point	284° F (140° C)*
Critical temp.	150° F (65° C)*
Coefficient of friction	0.09-0.12-
Elongation at break	4%-5%
Fiber water absorption	0%
UV resistance	moderate
Wet abrasion	superior
Dry abrasion	superior

\*-value based on date supplied by the fiber manufacturer for new, dry fiber



Tensile Strengths are determined in accordance with Cordage Institute 1500.2.

Test Methods for Fiber Rope. Minimum Tensile Strength (MTS) published

Assumes spliced terminations. Weight are calculated at linear density under stated preload (200d2) plus 4%.

<-> Design Factor 5:1 <-> Minimum D/d 3:1