



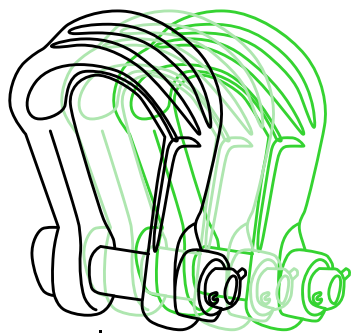
Rental Products

- ▶ MORBAR Rigging Rentals
- ▶ Load Measuring Equipment & Calibration

Holloway rents a broad selection of rigging equipment. Available with flexible rental periods and competitive pricing, our rental rigging equipment is certified and maintained to the highest standards, so it's always ready when you are.

Need professional measuring and calibration services? Holloway's team of trained and experienced technicians offer turnkey water bag load testing, specialty weighing services and equipment, center of gravity calculations, calibration services, and more.

Rigging Rentals



MORBAR
RIGGING RENTALS

Holloway's specialized rigging division expertly engineers, manufactures, and assembles spreader bars, wire rope slings, and associated rigging solutions for a global clientele.

- ▶ **Spreader Bars & Rental Slings**
- ▶ **Multi-Point Lifting Beams**
- ▶ **Rental Hardware**

Ideal for:

- ▶ Construction companies, industrial fabricators, marine contractors, petrochemical facilities.
- ▶ One-time engineered lifts
- ▶ Remote location lifts.

Eliminates:

- ▶ Initial time and expense of locating and purchasing equipment.
- ▶ Possible backorder delays.
- ▶ Storage and maintenance expense before and after the lift.

Advantages:

- ▶ Saves time and expense involved in locating and purchasing equipment.
 - ▶ Prevents backorder delays.
- No storage or maintenance expenses before or after the lift.



Rigging Rentals



MORBAR RIGGING RENTALS

RENTAL PRODUCTS



MORBAR
RIGGING RENTALS

Wide selection of rigging equipment available:

- ▶ Slings (single leg, 9-part, synthetics)
- ▶ Wide body shackles
- ▶ Link plates and master links
- ▶ 150-ton rolling blocks
- ▶ Load measuring devices
- ▶ ROV shackles & hooks
- ▶ Swivels
- ▶ Deadweight
- ▶ Trilinks from up to 1500 ton

Value-added features:

- ▶ All systems are pre-rigged to save downtime.
- ▶ All lifts include a full rigging drawing for prior approval, per your request.
- ▶ All MORBAR spreader bar lifting links are proof-tested.
- ▶ 9-part slings are tested as one unit, under a full test load.
- ▶ Our slings are manufactured to the tightest measured length tolerances in the world.

Rigging Rentals

MORBAR RIGGING RENTALS

RENTAL PRODUCTS



Multi-Point Lifting Beams



Holloway offers certified and customized multi-point lifting beam systems designed for the precise hoisting and deployment of subsea equipment and various construction applications.

Our custom-designed systems include cost-effective rental rigging, lift drawings, and field support, ensuring safe and efficient lifting operations with multiple pick points when needed.



Man Baskets & Skip Pans

RP-HHI 4 X 4 PB-1

ISOMETRIC VIEW

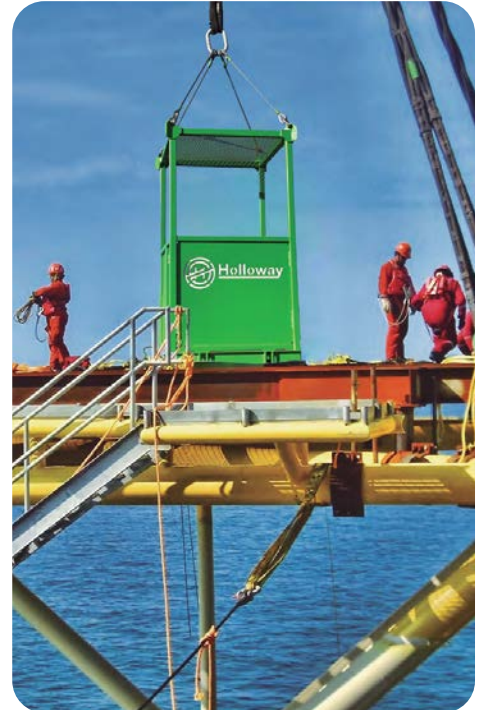
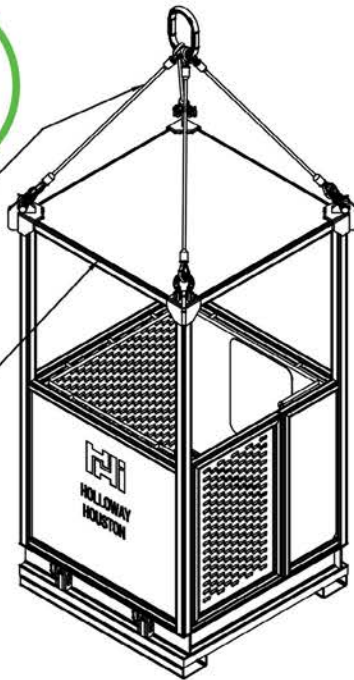
TOTAL WEIGHT: 2,350 LBS
 TEST WEIGHT: 1,400 LBS
 BASKET WEIGHT: 1,220 LBS
 BASKET CAPACITY: 1,000 LBS

(1) 1 1/4" MASTER LINK
 CAPACITY: 39,100 LBS

(4) 5/8" x 4' WIRE ROPE SLING
 CAPACITY: 3.9T ea.

(4) 7/8" BOLT TYPE SHACKLE
 CAPACITY: 6.5T ea.

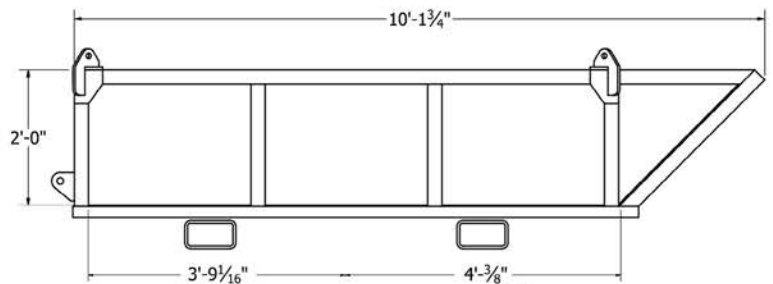
Heavy Gauge
 Expanded Metal



RP-HHI 4 X 8 HDSP-1

ISOMETRIC VIEW

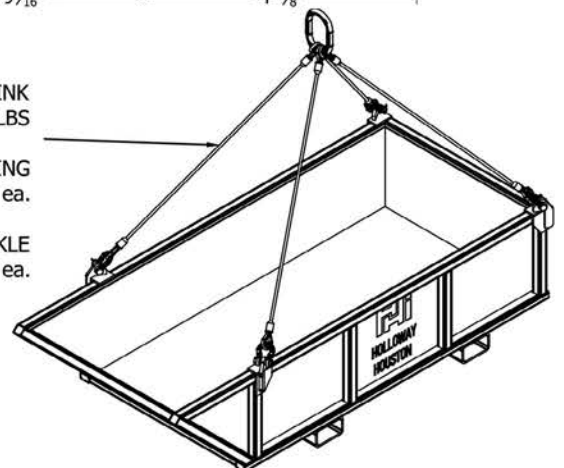
TARE WEIGHT: 1,850 LBS
 RATED CAPACITY: 4,000 LBS



(1) 1 1/4" MASTER LINK
 CAPACITY: 39,100 LBS

(4) 5/8" x 6' WIRE ROPE SLING
 CAPACITY: 3.9T ea.

(4) 7/8" BOLT TYPE SHACKLE
 CAPACITY: 6.5T ea.



Load Shackles

Telemetry Load Shackles: Up To 1550 M Ton

Holloway offers an unparalleled range of rental load cells, from 0.25 mt to an impressive 1550 mt in tension, and 5 mt to 750 mt in compression.

Our flagship 1550 mt telemetry load shackle stands as a testament to our commitment to providing cutting-edge solutions for the most demanding lifting projects.

This high-capacity shackle delivers real-time load data via telemetry, ensuring precise monitoring and enhanced safety throughout your operation.



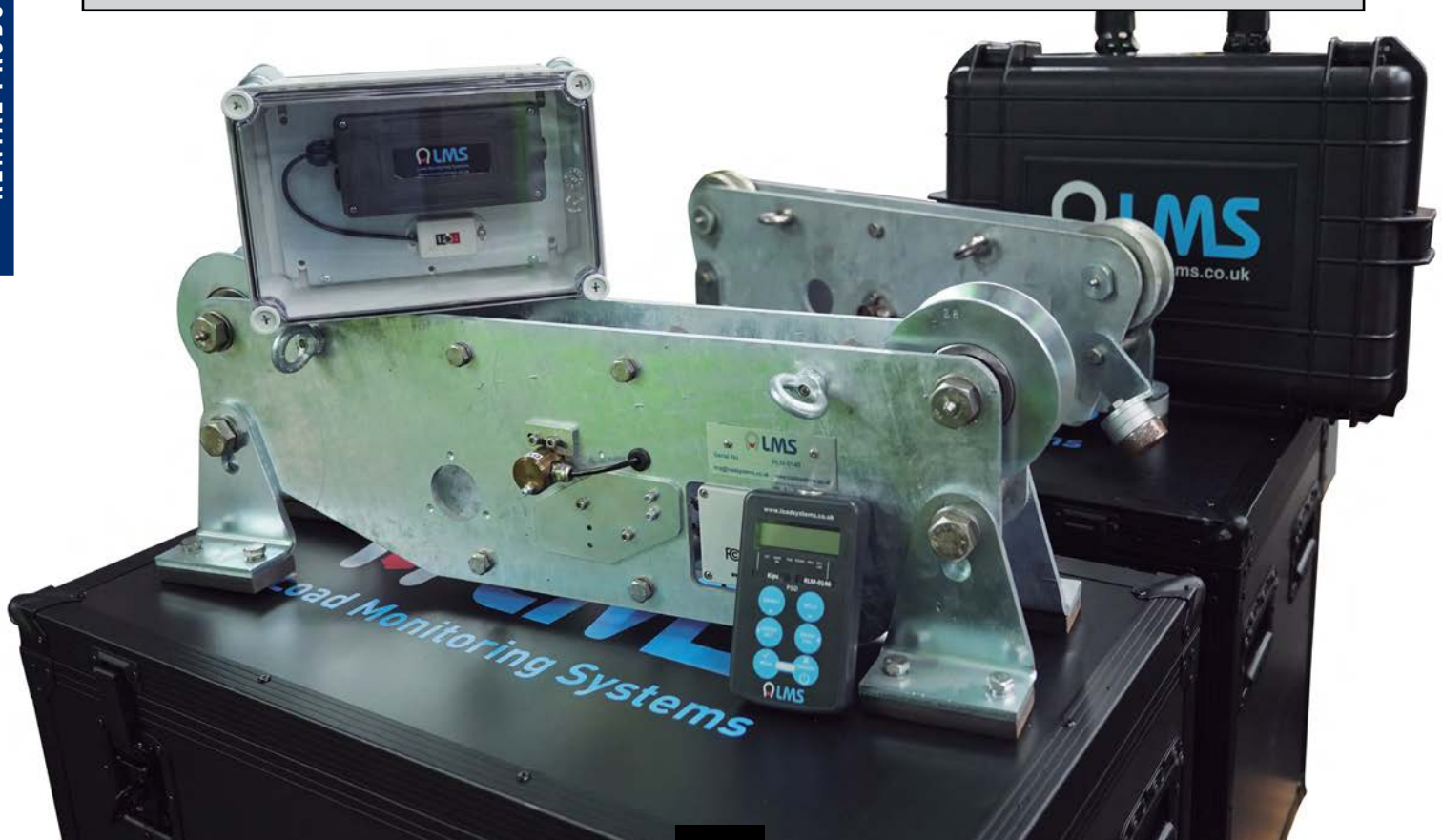
Running Line Tensioners



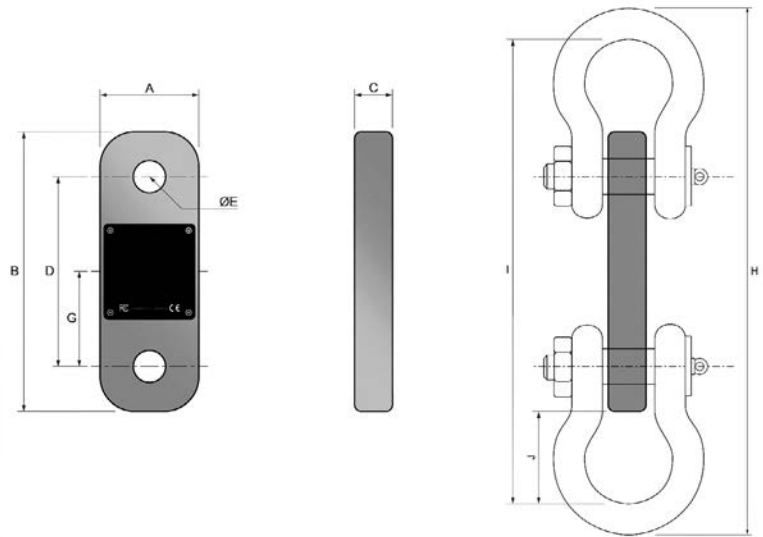
Holloway offers a diverse selection of running line tensioners, both for rent and purchase, designed for precise load monitoring in demanding marine and offshore environments. Engineered by industry experts, these tensioners deliver exceptional accuracy and corrosion resistance.

Our tensioners feature calibrated load pins for reliable readings across the entire measurement range, with optional proximity sensors to track speed and distance for precise line pay-out/pay-in data.

We offer a range of models to accommodate various wire rope sizes and load capacities. Each tensioner utilizes a 3-roller system, ensuring maximum accuracy and repeatability in even the harshest conditions.



Load Cells



Telemetry Load Cell

Load Capacity	A		B		C		D		E		Shackle Size	Approx Weight
(Tonne)	mm	Inches	mm	Inches	mm	Inches	mm	Inches	mm	Inches	(Tonne)	(Kgs)
1	52	2.047	151	5.94	31	1.22	117	4.60	12	0.47	6.5	0.35
3.25	60	2.362	183	7.20	31	1.22	133	5.23	20	0.78	13.5	0.65
6.5	84	3.307	238	9.37	32	1.25	162	6.37	27	1.06	25	1.35
13.5	84	3.307	292	11.49	45	1.77	182	7.16	40	1.57	35	2.3
25	127	5.000	332	13.07	60	2.36	206	8.11	55	2.16	55	5.7
55	163	6.417	466	18.34	75	2.95	286	11.25	75	2.95	85	16
100	236	9.291	610	24.01	105	4.13	350	13.77	100	3.93	120	36.05
150	272	10.708	695	27.36	136	5.35	395	15.55	118	4.64	150	59.5
250	353	13.897	829	32.63	175	6.88	469	18.46	145	5.70	200	123.5
300	398	15.669	937	36.88	190	7.48	517	20.35	158	6.22	250	167
400	490	19.291	1037	40.82	198	7.79	547	21.53	180	7.08	300	251
500	540	21.259	1137	44.76	198	7.79	607	23.89	190	7.48	400	311

Typical Specification

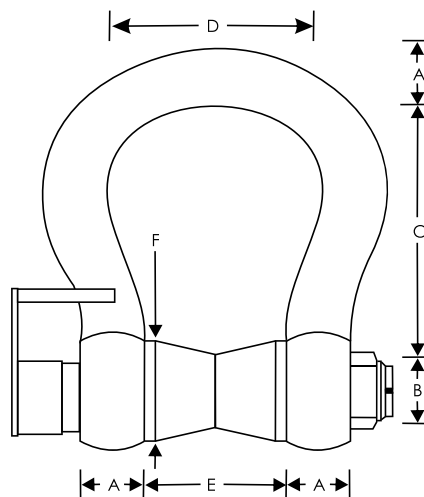
Rated Load	5 to 500 tonne	Calibration	12 months (calibration service available)
Proof Load	200% rated load (6.5te - 250te sizes)	Warranty	12 months
	150% rated load 300te and above	Material Finish	Lightweight, high tensile grade aluminium
Repeatability	< +/- 0.1% of applied load		
Operating temperature	-20°C to +70°C		
Environmental Rating	IP67		
Transmit rate	900ms (standard)		
Radio (Wireless Version)	2.4 Ghz; worldwide licence free		

Note: T24 Data-logging handset also available.

* Cabled version available

Load Shackles

Telemetry Load Shackle



SWL	A	B	E	C	D	F	WEIGHT
(Tonne)	mm	mm	mm	mm	mm	mm	Kgs
25	45	50	74	178	126	87	15
35	50	57	83	178	126	94	21
55	65	70	105	254	185	107	41
85	75	80	127	330	190	130	63
110	80	82	127	330	200	134	70
120	89	95	150	381	238	-	110
140	90	95	133	381	238	-	105
150	102	108	170	400	275	174	160
175	102	108	140	400	250	-	150
200	120	125	180	500	290	208	235
250	125	140	200	540	305	210	285
300	135	150	200	600	305	232	340
400	165	175	225	650	325	280	560
500	175	185	250	700	350	-	685
600	195	205	275	700	375	-	880
700	205	300	300	700	400	-	980
800	210	220	300	700	400	-	1100
900	220	230	320	700	420	-	1280
1000	230	240	340	700	420	-	1460

Typical Specification

Rated Load	25 to 1000 tonnes
Proof Load	200% of rated load
Ultimate Load	400%
Recommended Excitation Voltage	10V
Maximum Excitation Voltage	15V
Zero Balance	< +/- 0.05%
Bridge Resistance	700 ohm

Insulation Resistance	>2G Ohm @ 100V
Accuracy	+/- 1% of reading*
Repeatability	+/- 0.25% of reading
Sensitivity	2.0mV/V
Zero Temperature Co-Efficient	< +/- 0.005%
Span Temperature Co-Efficient	< +/- 0.003%
Operational Temperature Range	-10 to +50°C

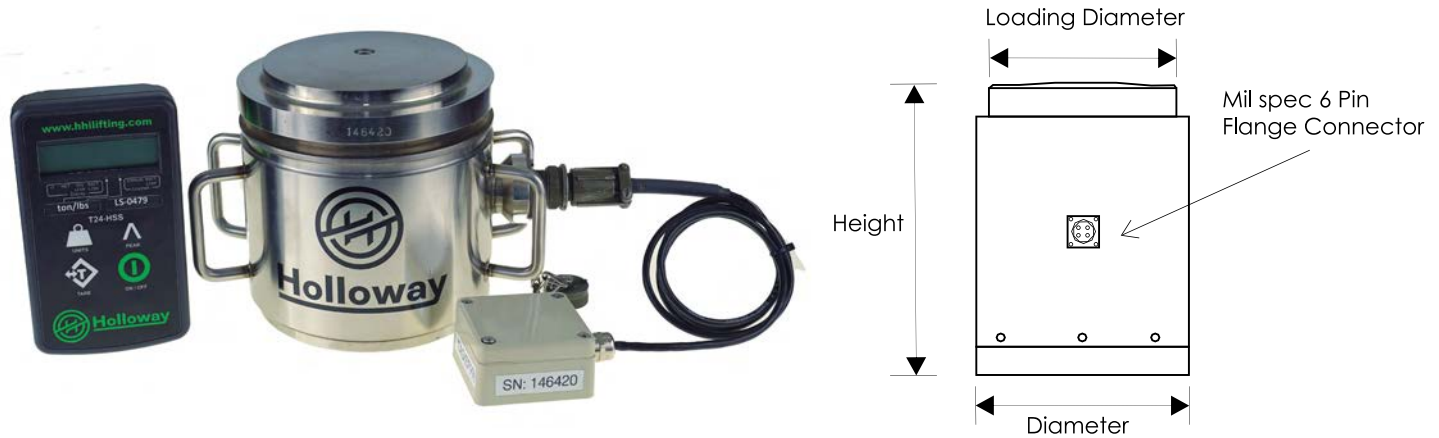
Electrical Connection	Red +ve Supply, Green +ve Signal Blue -ve Supply, Yellow -ve Signal
Environmental Protection	IP67
Telemetry Range	300 m

*As calibrated in a BS1610 grade 1 test machine, traceable National Standards

Note: T24 Data-logging handset also available

* Cabled version available

Compression Load Cells



Cell Type	Nominal Rated Load	Height	Diameter	Loading Dia.	Base Diameter	B.H.	Swivel Top Dia.	S.T.H.
Comp 50	50	110	76	60	130 Dia	40	65	10
Comp 100	100	150	100	80	150 Dia	50	100	20
Comp 200	200	180	127	110	150 Dia	50	127	30
Comp 300	300	180	150	130	200 Dia	50	150	30
Comp 500	500	300	203	170.5	265 Dia	50	203	50
Comp 1000	1000	425	290	250	400 Dia	75	290	50

Typical Specification

Rated Load	5 to 400 tonne
Proof Load	150% of rated load
Ultimate Load	500% of rated load
Rated Output	1.5mV/v +/- 0.5%
Recommended Excitation Voltage	10V
Maximum Excitation Voltage	20V
Zero Balance	< +/- 1%
Bridge Resistance	700 Ohm
Insulation Resistance	>2G Ohm @ 100V

Accuracy	< +/- 1%
Non-Repeatability	< +/- 0.2%
Zero Temperature Co-efficient	< +/- 0.005%
Span Temperature Co-efficient	< +/- 0.003%
Compensated Temperature Range	-10 to + 40°C
Electrical Connection	Red +ve Supply. Green +ve Signal. Blue -ve Supply. Yellow -ve Signal.
Environmental Protection	IP67

Note: T24 Data-logging handset also available

Hydraulic Cylinders

Hydraulic Cylinders

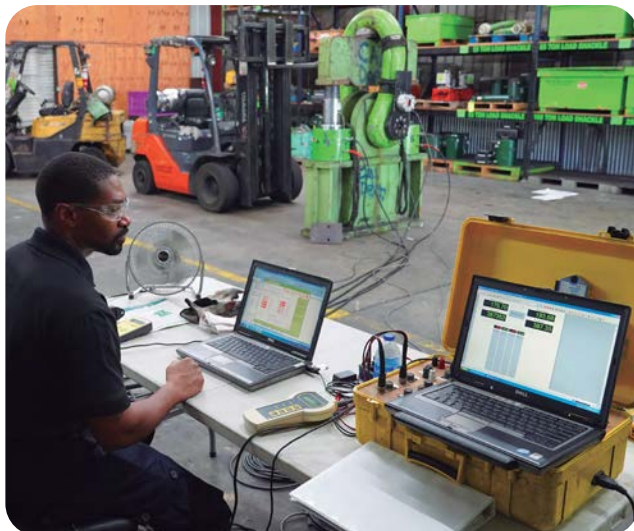
- ▶ Rental hydraulic cylinders (10,000 psi) from 20 ton to 1,000 ton.
- ▶ Rental hydraulic pumps, hoses, PSI gauges, & dial gauges available.
- ▶ Data acquisition package available.
- ▶ Calibration for special requirements available.
- ▶ Complete package with load cells also available.



Load Measuring Equipment & Calibration



- ▶ Load Cells
- ▶ Strain-Gauging
- ▶ Load Shackles
- ▶ Hydraulic Jacks
- ▶ Running Line Tensioners



Lifting & Rigging Solutions



Holloway

www.hhilifting.com